

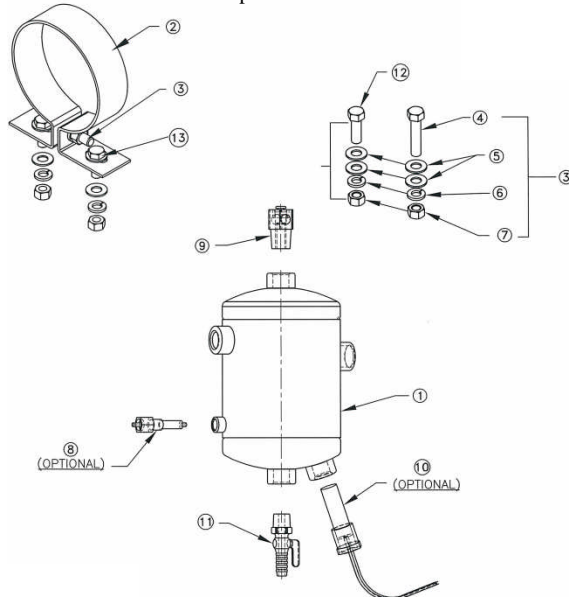
Model: FP 80
RCI Technologies
Universal Fuel Purifier

Nominal Flow:..... 1 gal/min (3.80 lts/min)
 Sump Capacity:.....8 oz. (Approximately)
 In & Out Couplings:.....1/2" NPT
 Top Port:1/2" NPT
 Sensor Port *:.....1/8" NPT
 Drain Valve:..... Comm/Brass 1/2" Valve
 Height:.....8" (203.2 mm) Strap mount
 Width:.....4.5" (114.3 mm)
 Gross Weight:6 lbs.

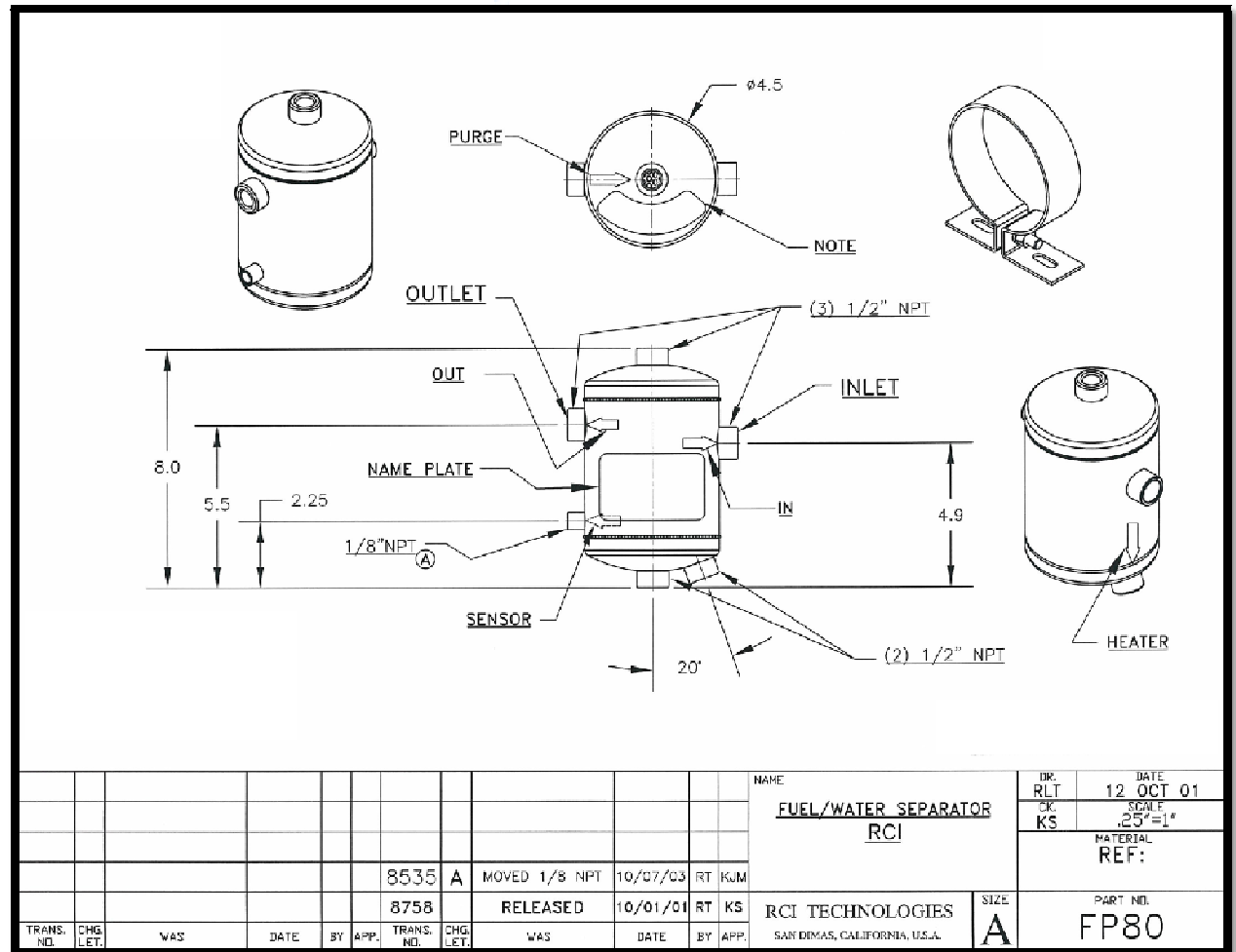
*Water Sensor and Heater are optional items.



APPLICATIONS
 Small Diesel Engines



ITEM	PARTS NO	DESCRIPTION	QTY
1	FP 80	FUEL PURIFIER	1
2	RC-002	BRACKET	2
3	RC-150	BOLT ASSY.	2
4	RC-151	BOLT 3/8 - 16 x 1.5" L.	2
5	RC-014	FLAT WASHER (SAE)	12
6	RC-015	LOCK WASHER	6
7	RC-107	NUT 3/8 -16	6
8	RC-SEN-K	RCI WATER SEN. KIT (OPTIONAL)	1
9	RC-APV	AIR PURGE VALVE	1
10	RC-HET	HEATER - 72 W 12-24 V (OPTIONAL)	1
1	RC-DVC	DRAIN VALVE COCK	1
12	RC-161	BOLT 3/8 - 16 x 1.0" L.	4
13	RC-149	BOLT ASSY.	4



										NAME		DR. DATE		
										FUEL/WATER SEPARATOR		RLT 12 OCT 01		
										RCI		SCALE .25"=1"		
												MATERIAL REF:		
										8535 A		MOVED 1/8 NPT 10/07/03 RT KJM		
										8758		RELEASED 10/01/01 RT KS		
										RCI TECHNOLOGIES		SIZE		
										SAN DIMAS, CALIFORNIA, U.S.A.		PART NO.		
										A		FP80		
TRANS. NO.	CHG. LET.	WAS	DATE	BY	APP.	TRANS. NO.	CHG. LET.	WAS	DATE	BY	APP.			