

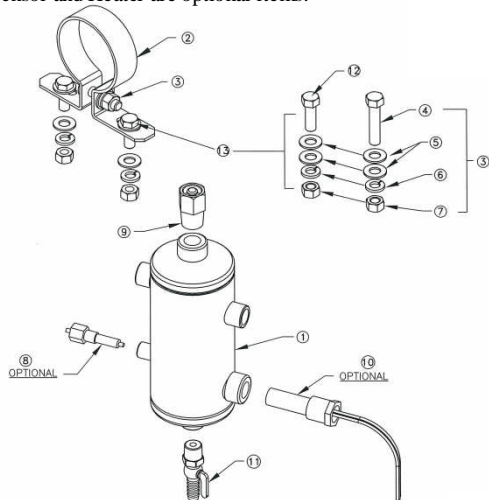
Model: FP 50

RCI Technologies

Universal Fuel Purifier

Nominal Flow:5 gal/min (1.9 lts/min)
 Sump Capacity: 4 oz. (Approximately)
 In & Out Couplings: 3/8" NPT
 Top Port: 1/2" NPT
 Sensor Port *: 1/8" NPT
 Drain Valve: Comm/Brass 1/2" Valve
 Height: 8.04" (204.2 mm)
 Width: 3" (76.2 mm)
 Gross Weight: 4 lbs.

*Water Sensor and Heater are optional items.



ITEM	PART NO.	DESCRIPTION	QTY.
1	FP 50	FUEL PURIFIER	1
2	RC-001	BRACKET	1
3	RC-150	BOLT ASSY.	1
4	RC-151	BOLT 3/8 - 16 x 1.5" L.	1
5	RC-014	FLAT WASHER (SAE)	6
6	RC-015	LOCK WASHER	3
7	RC-107	NUT 3/8 -16	3
8	RC-SEN-K	RCI WATER SEN. KIT (OPTIONAL)	1
9	RC-APV	AIR PURGE VALVE	1
10	RC-HET	HEATER - 72 W 12-24 V (OPTIONAL)	1
11	RC-DVC	DRAIN VALVE COCK	1
12	RC-161	BOLT 3/8 - 16 x 1.0" L.	2
13	RC-149	BOLT ASSY.	1



APPLICATIONS
 Small/Mid-size Marine
 and Sports Equipment

