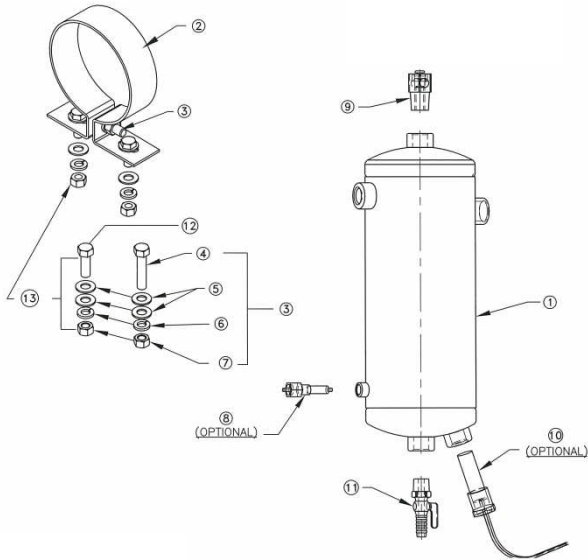


Model: FP 400
RCI Technologies
Universal Fuel Purifier

Nominal Flow:..... 2 gal/min (7.6 lts/min)
 Sump Capacity:..... 1.5 pt. (Approximately)
 In & Out Couplings:..... 1/2" NPT
 Top Port: 1/2" NPT
 Sensor Port *:..... 1/8" NPT
 Drain Valve:..... Comm/Brass 1/2" Valve
 Height:..... 12" (304.8 mm) Strap mount
 Width:..... 4.5" (114.3 mm)
 Gross Weight: 9 lbs.

*Water Sensor and Heater are optional items.

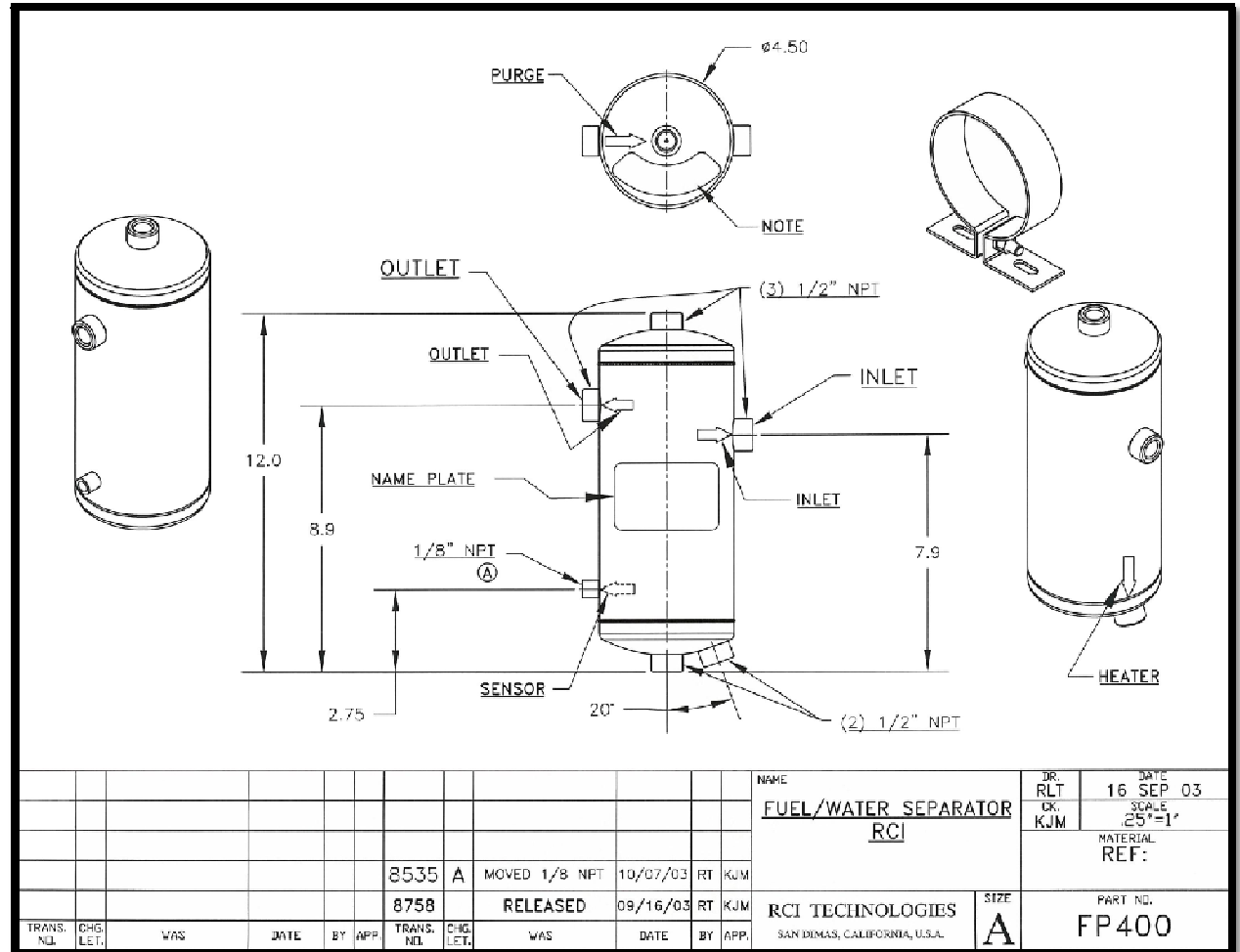


ITEM	PART NO.	DESCRIPTION	QTY
1	FP 400	FUEL PURIFIER	1
2	RC-002	BRACKET	2
3	RC-150	BOLT ASSY.	2
4	RC-151	BOLT 3/8 - 16 x 1.5" L.	2
5	RC-014	FLAT WASHER (SAE)	12
6	RC-015	LOCK WASHER	6
7	RC-107	NUT 3/8 -16	6
8	RC-SEN-K	RCI WATER SEN. KIT (OPTIONAL)	1
9	RC-APV	AIR PURGE VALVE	1
10	RC-HET	HEATER - 72 W 12-24 V (OPTIONAL)	1
11	RC-DVC	DRAIN VALVE COCK	1
12	RC-161	BOLT 3/8 - 16 x 1.0" L.	4
13	RC-149	BOLT ASSY.	4



APPLICATIONS

- Gen Sets
- Heavy Duty Diesel Trucks
- Machinery
- Agricultural Equipment



										NAME		DR.	DATE		
										FUEL/WATER SEPARATOR		RLT	16 SEP 03		
										RCI		CK:	SCALE		
												KJM	.25"=1"		
												MATERIAL REF:			
										8535	A	MOVED 1/8 NPT	10/07/03	RT	KJM
										8758		RELEASED	09/16/03	RT	KJM
TRANS. NL.	CHG. LET.	WAS	DATE	BY	APP.	TRANS. NL.	CHG. LET.	WAS	DATE	BY	APP.	RCI TECHNOLOGIES	SIZE	PART NO.	
												SAN DIMAS, CALIFORNIA, U.S.A.	A	FP400	