

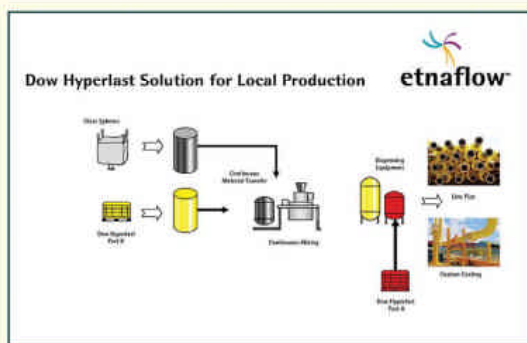
OG&PE

Oil, Gas & Petrochem Equipment®

WHAT'S NEW in Oil Industry Onshore & Offshore Products and Services



What's New In Products & Services For PIPELINE, STORAGE, FILTRATION, SEPARATION



On-site, remote, mobile mixing of deepwater pipeline coatings

You can on-site-blend glass syntactic polyurethane (GSPU) coating and insulation for deepwater pipelines — in remote locations with new **ETNAFLOW Portable Mixing Plants**.

Advanced process control ensures finished product formulation accuracy, quality, and consistency along with safe and efficient mixing. ETNAFLOW is engineered to require fewer operational workers and capital resources. It eliminates enormous storage and disposal requirements of conventional GSPU mixing.

Dow Hyperlast

Station Road, Birch Vale, High Peak
Derbyshire SK22 1BR United Kingdom

1

New engines for gas compression

275GL Series engines have been launched for gas compression applications. They comprise robust construction and reliability of ATGL Series enhanced engine control system.

The new 12 or 16-cylinder engine's factory-mounted lube oil and cooling systems reduce time and cost required to design, fabricate, and integrate 275GL into a compressor package.

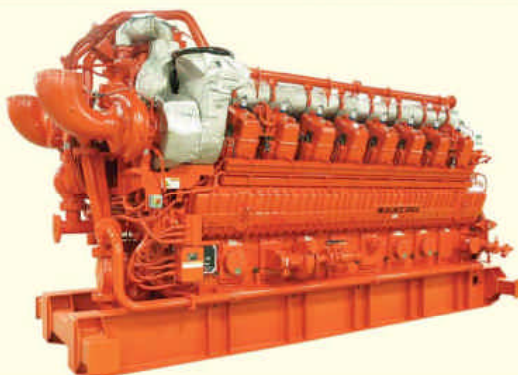
Standard on 275GL is an enhanced easy-to-use Engine System Manager to optimize performance and maximize uptime by integrating spark timing control, turbocharger control, speed governing, knock detection, start-stop control, diagnostic tools, fault logging, engine safeties, and air/fuel ratio control.

Complete engine details are yours free on request.

Dresser Waukesha, Dresser Incorporated

1101 West St. Paul Avenue, Waukesha WI 53188-4999

2



New gas-processing, flow separation valves

SWIRL Valve is newly introduced for gas processing. It is designed to improve separation of two-phase flow across pressure reduction choke, Joule Thomson, or control valves. This is said to significantly improve downstream separator efficiency.

The new valve technology will be effective in flow debottlenecking of existent separator trains. It will minimize liquid carry-over and/or gas carry-under to reduce chemical losses and enable higher liquid recovery.

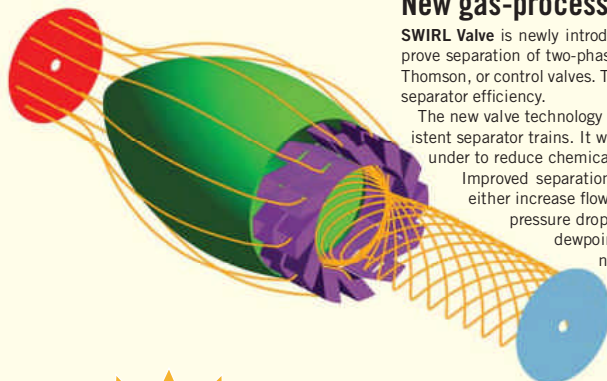
Improved separation efficiency via SWIRL Valve may be used to either increase flow capacity of existing JT-LTS plants and reduce pressure drop required for JT cooling, or lower hydrocarbon dewpoint and reduce glycol carry-over, it's noted. The new valves can be applied for all Joule Thomson expansion gas flows.

Complete SWIRL Valve information is available free upon request.

Twister BV

Einsteinlaan 10, 2289 CC Rijswijk, The Netherlands

3



Extra-large wrenches

Twenty-three new **Extra-Large Combination Wrenches** like this are on the market for heavy oil and gas uses including production rigs. In lengths to 3 ft, the tools come in standard and metric sizes with openings from 2 9/16 to 4 in. and from 55 to 80 mm. Features include drop-forged steel heads and 12-point box ends to handle stubborn fasteners.

Stanley-Proto Industrial Tools

2195 East View Parkway, Suite 103
Conyers GA 30014

4



MAY 2009

VOLUME 55, NUMBER 7

ONLINE AT OGPE.COM

Bonus distribution of this issue will be made at:
ILTA: Independent Liquid Terminals Association
June 9 to 11, Houston



GO TO OGPE.COM

Total nitrogen/sulfur/chlorine analyzer

TITAN 4000 Total Nitrogen/Sulfur/Chlorine (NSX) Analyzer — for use in refineries, petrochemicals, analytical services, and research analysis — is presented in this 12-page brochure.

The TITAN 4000's new modular design means that you only receive the analytical modules you require — so, depending on the configuration, you can fit your NSX analyzer into the tightest of spaces.

You can choose between a dedicated system, a double system, or a fully combined NSX analyzer. The integration of the firm's proven AI 3000 liquid autosampler, mounted vertically to the instrument, also aids in saving valuable lab space.

Thermo Scientific

253 1410 Gillingham Lane, Sugar Land, TX 77478



Fuel recirculating system features back-up pump

FRS 660-11-DPU-UL is the newest addition to this company's line of diesel fuel purifiers and fuel recirculating systems (FRS).

The Duplex Pump Unit (DPU) is designed to automatically circulate and clean the fuel in customer's fuel storage tanks on a preprogrammed schedule. The DPU features two fuel pumps, which operate alternately to circulate the fuel through the system. The firm's other FRS units utilize a single pump.

The benefit of the duplex pumps is that, in case of primary system failure, the customer always has the security and peace of mind provided by the back-up pump — it's reported. All FRS units employ the company's patented filterless technology, using no filters or moving parts.



27 **RCI Technologies Inc.**
462 Borrego Court, Suite D, San Dimas, CA 91773

IR sensing combustible gas detection system

New IR4000 Infrared Combustible Gas Detection System

is a scalable plant safety solution with voting. It's suitable for a wide range of hazardous industry processes and plant applications, some of which include: LNG/LPG processing and storage, oil and gas production platforms, petrochemical refining, compressor stations, and wastewater treatment.

The system's IR4000M Multi-Point Monitor can connect up to eight IR400 Point IR Gas Detectors and read their status with one command, one detector at a time. The highly versatile IR4000M can also calibrate, gas check and zero each IR400 sensor with a single command — reducing the cycle time for routine maintenance. The monitor incorporates a display, relay module and a data concentrator in an explosion-proof enclosure and magnetic interface.



30 **General Monitors**
26776 Simpatica Circle, Lake Forest, CA 92630

Underwater cleaning system

CaviBlaster underwater cleaning system reduces cleaning time by up to 50%. The undersea cleaning system induces cavitation to facilitate the removal of marine growth — such as barnacles and other encrustations, plus weed, built up corrosion, and all other forms of unwanted growth.

The CaviBlaster works on all types of materials and can be used on all sub-sea structures, whether fabricated in wood, concrete, steel, etc. — such as oil rigs, piers, bridge foundations, and ship hulls, down to a depth of 100 meters.

The cavitation plume does not cause any damage or degradation of the surface being cleaned, and does not remove protective surface coatings such as anti-fouling paint.

24 **Charles Cleghorn Ltd.**, Church Farm House, High Street, Croydon, Royston, Herts SG8 0DN, UK



New online control valve sizing program

FlexSelect is this firm's new control valve size selection process for their rotary control FlexStream Technology. The online program helps customers determine the appropriate valve and trim configuration for their quarter-turn control valve needs.

After inputting the appropriate data into the program, an estimated sizing configuration is generated that, if given the proper data, will show the client the recommended characteristics to meet the requirements for their application. The program is strictly for the use of control valve applications using the company's proprietary FlexStream Technology.

Control valves utilizing the FlexStream Technology force fluids or gases through a series of right angle turns, providing the ability to control each stage of pressure lowering, while removing kinetic energy from fluids and lowering pressure in a controlled manner.

28 **MOGAS Industries Inc.**
14330 E. Hardy St., Houston, TX 77039

Water jet accessory catalog

This new and free 102-page **water jet accessory catalog** introduces a variety of water jet tools for pipe cleaning, pavement marking removal, and other applications.

Among the new accessories are Typhoon self-rotating nozzles, for cleaning pipes and tubes from 5/8 to 50 in. in diameter, and a new 40,000 psi SPIN-NOZZLE head. New system valve rebuild kits feature a cartridge-style seal that can be changed in 60 seconds — like the one in the firm's lances and foot controls. The catalog also introduces the STARJET-PLUS, an automated pavement maintenance system with many new features that significantly improve productivity.

254 **NLB Corp.**
29830 Beck Rd., Wixom, MI 48393-2824



Internal weld inspection system

This **Internal Weld Scanning Tool** inspects the internal size and shape of girth welds on pipes that are going to be used in deep-sea subsea oil and gas applications.

It internally scans welds inside pipes — both visually and dimensionally — enabling engineers to quickly and confidently assess the quality of the root weld.

The technology can be deployed onshore and offshore at different stages of the pipe welding process. The tool can be used on corrosion-resistant alloy-lined pipe to identify sour (aggressive) ingress points, in both clad butt-weld and clad weld inlay applications. It can also be used to improve weld procedure development efficiency and to check the root weld and geometry before next passes are deposited.

25 **Optical Metrology Services Limited**, 8 Twyford Business Centre, London Road, Bishop's Stortford, Hertfordshire CM23 3YT, UK



Water purification system

UltraDynamics ultraviolet disinfection systems are used on potable water pressure sets built by Specific Equipment to pressurize the potable water supply for offshore drilling rigs, platforms, work barges, and land-based camps.

The potable water pressure set intakes water from the storage tank and then pumps it through a 5 micron filter to a fresh water pressure tank, and then before going to the rig's potable water system, the water is disinfected by the UV system. Systems can be designed to meet application-specific needs, including Class I, Division II compliant UV systems for hazardous area classifications. NEMA 7 and "Z" purge designs are available.

29 **Severn Trent Services**
3000 Advance Lane, Colmar, PA 18915



Needle and ball valves for low/medium pressure applications

This firm has re-developed its range of **ball and needle valve products** and re-launched them for low/medium pressure applications with an operating range from 1,000 psi / 70 bar to 15,000 psi / 1,035 bar. The valves offer high integrity to meet medium pressure and other demanding instrumentation applications, including hydraulic systems for wellhead control, emergency shutdown systems, chemical injection skids, pumping packages, and test equipment.

Among other features: constructed from 316 stainless steel as standard (other material options offered), in compliance with NACE MR-01-75 as standard, and 1/4 to 2 in. tube connection sizes.

31 **Bifold Fluidpower Ltd**
Greenside Way, Middleton, Manchester M24 1SW, UK



Chemical processing and storage metal pumps deliver energy savings

Advanced Series metal pumps provide the chemical processing and storage industry with an energy-efficient Air-Operated Double-Diaphragm Pump (AODDP) solution. The Advanced Series pumps feature the firm's patent-pending Pro-Flex X Air Distribution System (ADS), which offers operational flexibility in multiple chemical transfer applications. This flexibility is accomplished by the Efficiency Management System (EMS), which optimizes the Pro-Flo X ADS for the actual operation parameters, regardless of the application demands or pump size.

The EMS allows the operator to use an integrated control dial to select the efficiency point and flow rate that best suits the application. The Pro-Flo X with EMS is declared by the manufacturer to provide chemical processors with the most efficient AODDP solutions available. The results, in addition to lower energy costs, are higher performance, lower operating costs, and performance flexibility. Due to bolted configuration, the Advanced Series pumps ensure total product containment while the redesigned liquid path reduces internal friction to maximize output and efficiency.

26 **Wilden Pump & Engineering Co.**, 22069 Van Buren St., Grand Terrace, CA 92313

