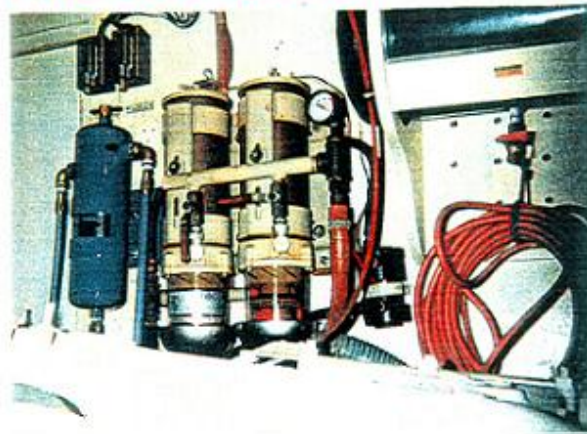


# POWER & MOTOR YACHT.

## SPECIAL ENGINES ISSUE

### Pure As Driven Fuel



After years of installing diesel fuel filters on trucks and buses, RCI knows that problems with fuel and fuel systems are universal, so it just introduced the new RCI Marine Diesel Fuel Purifier.

The RCI Purifier (pictured above, blue canister) is a centrifugal separator installed in the fuel line between the fuel tank and primary filter. As fuel enters the purifier, internal baffles cause it to spin. The spinning fuel is then cast against a steel plate, as heavier contaminants drop from the fuel stream. Impurities like water, rust, and algae are contained in the sump

area of the purifier so only clean fuel continues on to the engine. An interior baffle system prevents contaminants from migrating to the suction outlet in rough seas.

Individual RCI Purifiers are designed to handle fuel rates from gravity flow to 200 gallons per minute, and with no moving parts, there is nothing to change or replace.

Other features include powder-coated components, including mounting straps and brackets, a solid brass fill plug, and UL-approved brass drain valve. Stainless steel mounting nuts, bolts, and washers are also standard. According to RCI, its purifier will extend the life of the engine's primary filter, injection pump, and injectors as well as the engine itself. Prices start at \$229 depending on flow capacity.

**RCI Purifier West, Dept. PMY,**  
466 W. Arrow Highway, Ste. D, San  
Dinas, CA 91773. ☎(800) 868-2088.  
Fax: (909) 305-1245. (Or circle Reader  
Service No. 298)



JANUARY 1997



\$3.95 US/\$4.95 CAN

Sea Ray's new diesel-powered  
10 Sundancer at anchor  
in the Bahamas