

Model: **FP 4000**
RCI Technologies
Universal Fuel Purifier

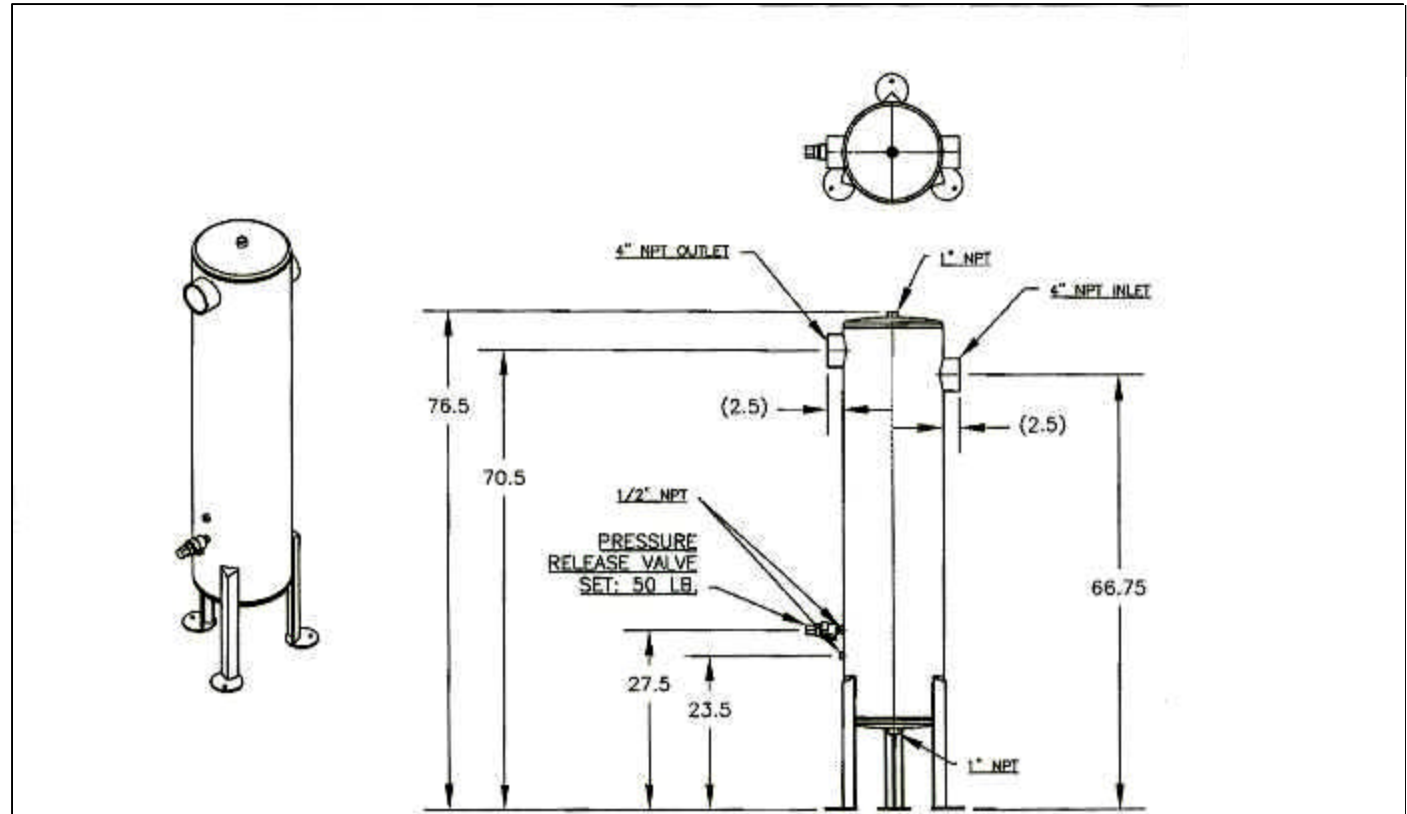
Nominal Flow.....1514 lts/min (400 gal/min)
 In and Out Couplings.....4" NPT
 Top Port.....1" NPT
 Heating Element.....N/A
 Sensor Port*.....1/2" NPT
 Manual Air Purge.....Standard
 Factory Pre-Set
 Pressure Relief Valve.....Standard
 Drain Valve..... Standard 1" Port
 Height.....76.5"
 Width.....15.0"
 Approx. Weight.....250 lbs.
 *Water Sensor optional item.

APPLICATIONS

Larger Pumping Stations

Aircraft Fueling

Fuel Docks



FINISH: BLACK

										NAME FUEL/WATER SEPARATOR RCI		DR. RLT	DATE 05 MAY 05
												EX. KJM	SCALE .0469"=1"
												MATERIAL REF:	
										RCI TECHNOLOGIES		SIZE A	PART NO. FP4000-R
TRANS. NO.	CHG. LET.	WAS	DATE	BY	APP.	TRANS. NO.	CHG. LET.	WAS	DATE	BY	APP.	SAN DIMAS, CALIFORNIA, U.S.A.	
						8833		RELEASED	05/05/05	RT	KJM		