

Model FP 2000-S *
RCI Technologies
Universal Fuel Purifier

Nominal Flow:.. 100 gal/min (378.5 lts/min)
 In & Out Couplings:.....2" NPT
 Top Port:.....1" NPT
 Sensor Port **:.....1/2" NPT
 Drain Port:.....1" Drain
 Height:.....42.5" (1079.5 mm)
 Width:.....15.0" (381 mm)
 Gross Weight:..... 124 lbs.

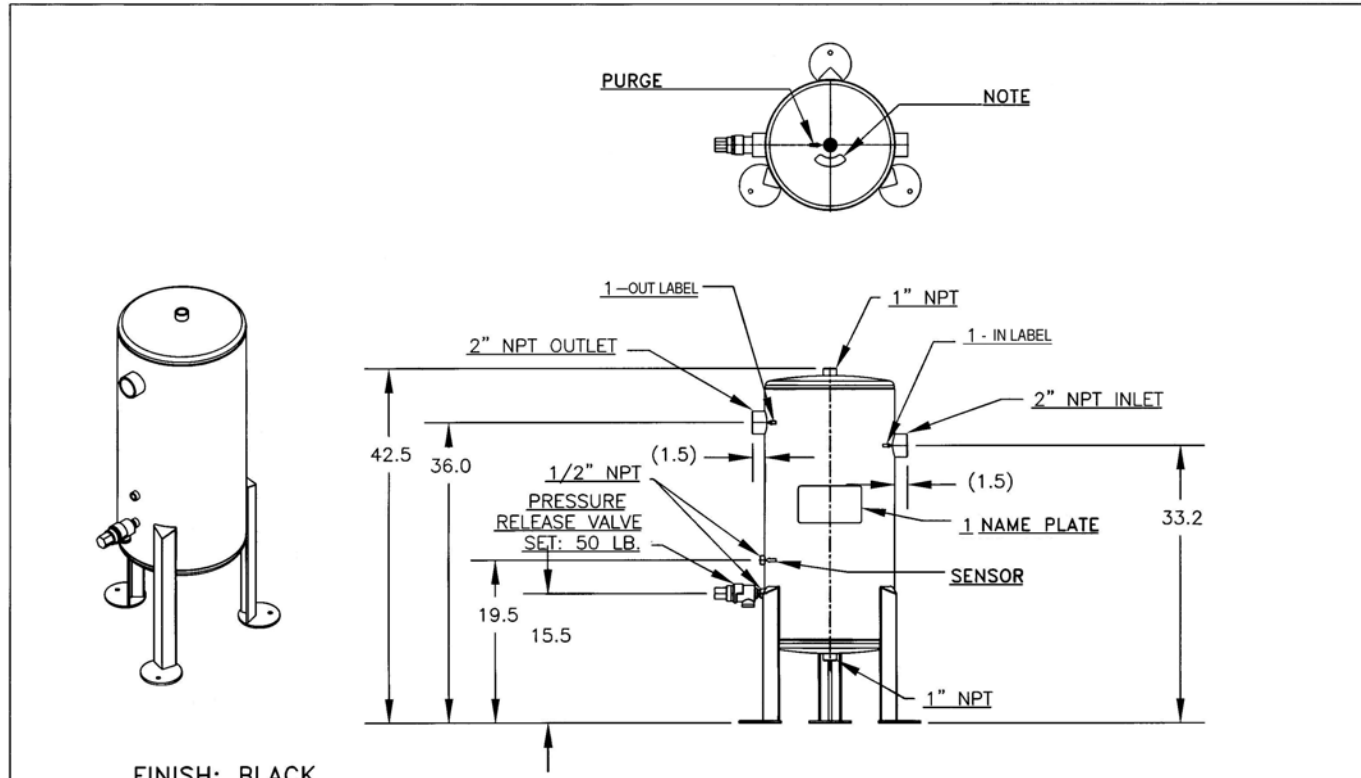
**Water Sensor Kit optional.
 *Standard Factory Preset Relief Valve.

APPLICATIONS

Larger Pumping Stations

Aircraft Fueling

Fuel Docks



										NAME		DR. RLT	DATE 30 MAR 06
										FUEL/WATER SEPARATOR		CK. KJM	SCALE .062"=1"
										RCI		MATERIAL REF:	
										RCI Technologies		SIZE A	PART NO. FP 2000-S
										San Dimas, California			
TRANS. NO.	CHG. LET.	WAS	DATE	BY	APP.	TRANS. NO.	CHG. LET.	WAS	DATE	BY	APP.		
						XXXX		RELEASED	03/30/06	RT	KJM		